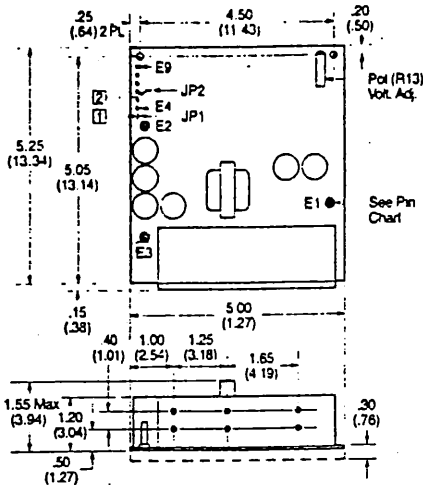


MECHANICAL SPECIFICATIONS

Note: Dimensions are in inches and (cm.).

3T12AP, 3T20AP

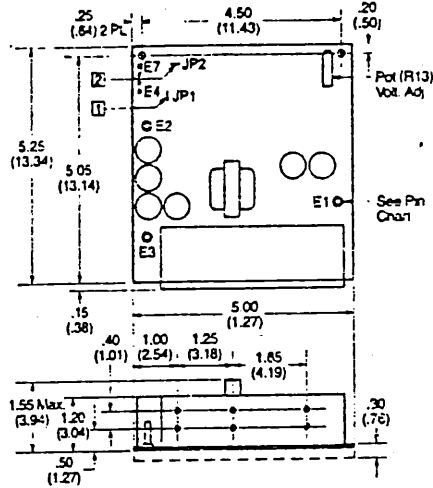


PIN CHART

E1	+ INPUT	3
E2	+ OUTPUT	3
E3	RETURN	3
E4	- REMOTE SENSE	1
E5	+ REMOTE SENSE	
E6	POS SYNC OUT	4
F7	NEG SYNC OUT	4
E8	SYNC IN	2
E9	INHIBIT (REMOTE ON/OFF)	

- 1 Remove JP1 for remote sense.
- 2 Remove JP2 to synchronize to another 3T12AP or 3T20AP.
- 3 Terminals are 8-32 studs, 8 to 12 in-lbs torque required.
- 4 E6 output is used as clock to synch other 3T12AP's or 3T20AP's to a single 3T12AP or 3T20AP. E7 is used to synch 3T5AN's to a single 3T12AP or 3T20AP.

3T5AN



PIN CHART

E1	+ INPUT	3
E2	- OUTPUT	3
E3	RETURN	3
E4	+ REMOTE SENSE	1
E5	- REMOTE SENSE	
E6	INHIBIT	
E7	SYNC IN	2

- 1 Remove JP1 for remote sense.
- 2 Remove JP2 to synchronize 3T5AN to 3T12AP or 3T20AP.
- 3 Terminals are 8-32 studs, 8 to 12 in-lbs torque required.

BOSCHERT WARRANTY

90 DAY WARRANTY

BOSCHERT INCORPORATED warrants power supplies manufactured by it to be free from defects in material and workmanship.

BOSCHERT INCORPORATED will repair or replace any such product which is returned to BOSCHERT INCORPORATED with transportation charges prepaid within ONE YEAR from the original date of invoice from BOSCHERT INCORPORATED or an

authorized BOSCHERT distributor where BOSCHERT INCORPORATED examination discloses a defect in material or workmanship and no misuse, improper operation, unauthorized repair or modifications of the power supply are in evidence.

THIS WARRANTY IS IN LIEU OF ALL OTHER WARRANTIES, EXPRESS, IMPLIED, OR STATUTORY, INCLUDING THE WARRANTY OF

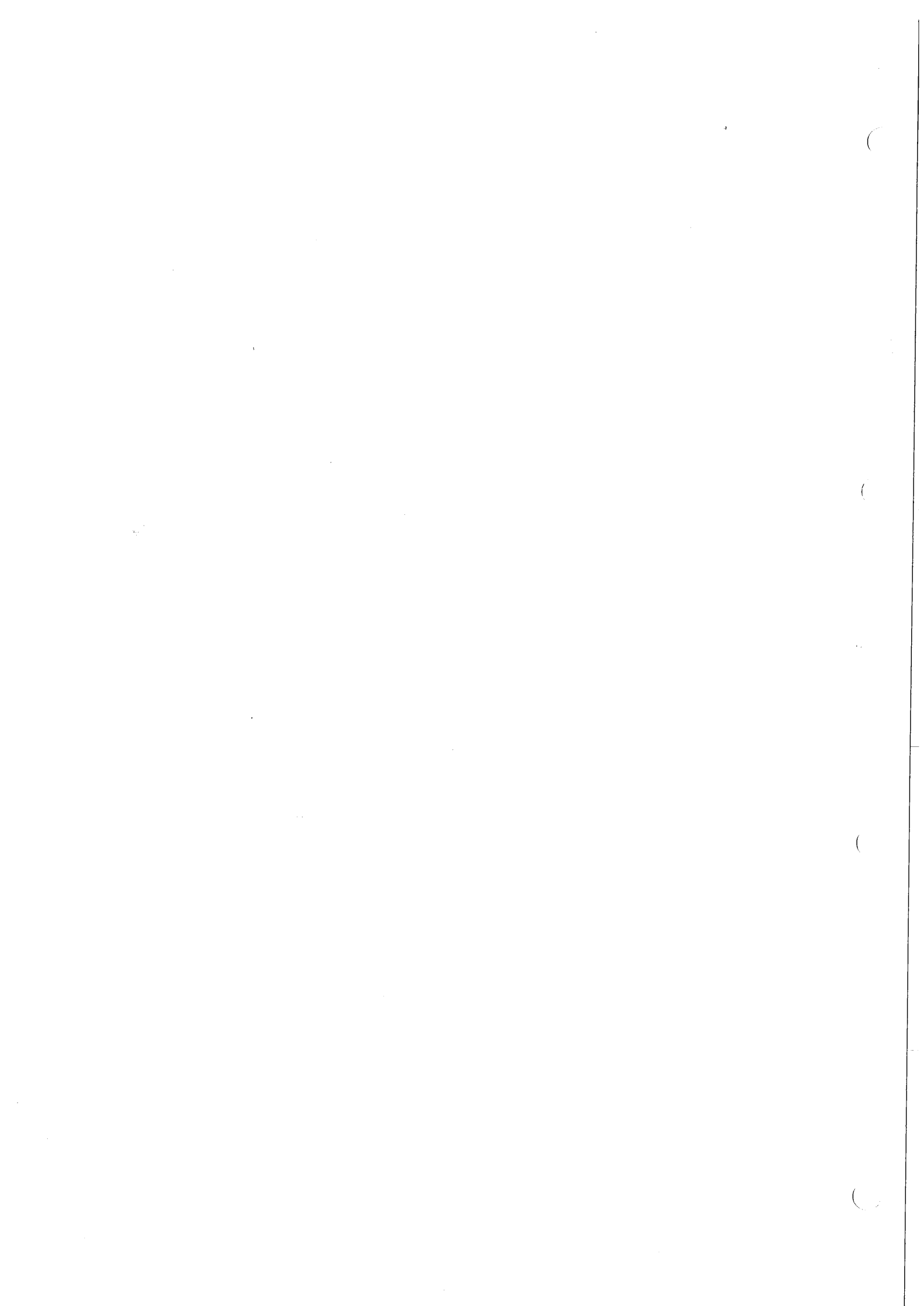
MERCHANTABILITY AND THE WARRANTY OF FITNESS OR SUITABILITY FOR A PARTICULAR PURPOSE.

In no event will BOSCHERT INCORPORATED be liable for special, incidental or consequential damages.

This is the entire extent of BOSCHERT INCORPORATED liability for a defective or inoperative power supply.

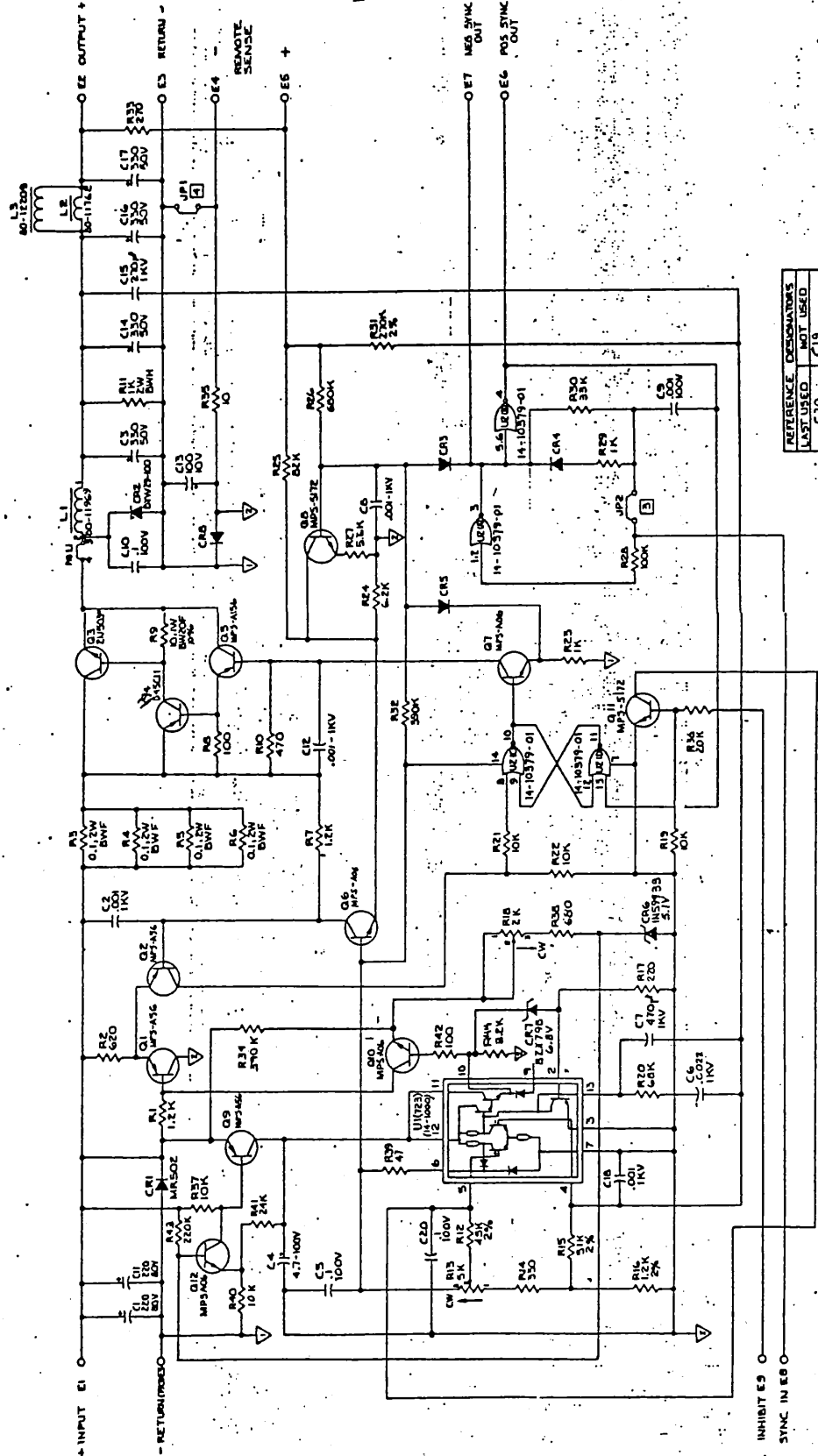
Boschert Incorporated
384 Santa Trinita Avenue
Sunnyvale, California 94086
408/732-2440 TWX 910-339-9241





REV	DESCRIPTION	DATE	APPROVED
1	PRE-REL TO PROD.	11/13/58	WJH
2	PROTO-TYPE ASH-C28	11/14/58	WJH
3	PRE-RELEASE	11/16/58	WJH
A	REL TO PROD	11-17-58	WJH
B	INCORP. MR. REVISIONS	11-17-58	WJH
C	INCORP.	11-17-58	WJH

90-12703



1. CAPACITORS ARE IN MICROFARADS. VOLTAGE RATINGS ARE IN D.C.
 2. RESISTORS ARE IN OHMS, IN K, WATT, C.F. DIODES ARE IN 1N4148
- NOTES: UNLESS OTHERWISE SPECIFIED

REFERENCE DESIGNATOR	LAST USED	NOT USED
C20		C19
CR8		
CR9		
CR10		
CR11		
CR12		
CR13		
CR14		
CR15		
CR16		
CR17		
CR18		
CR19		
CR20		
CR21		
CR22		
CR23		
CR24		
CR25		
CR26		
CR27		
CR28		
CR29		
CR30		
CR31		
CR32		
CR33		
CR34		
CR35		
CR36		
CR37		
CR38		
CR39		
CR40		
CR41		
CR42		
CR43		
CR44		
CR45		
CR46		
CR47		
CR48		
CR49		
CR50		
CR51		
CR52		
CR53		
CR54		
CR55		
CR56		
CR57		
CR58		
CR59		
CR60		
CR61		
CR62		
CR63		
CR64		
CR65		
CR66		
CR67		
CR68		
CR69		
CR70		
CR71		
CR72		
CR73		
CR74		
CR75		
CR76		
CR77		
CR78		
CR79		
CR80		
CR81		
CR82		
CR83		
CR84		
CR85		
CR86		
CR87		
CR88		
CR89		
CR90		
CR91		
CR92		
CR93		
CR94		
CR95		
CR96		
CR97		
CR98		
CR99		
CR100		

APPROVED	DATE	DESCRIPTION	REV
D. ROBBE	11/13/58	3T SWITCHING REG.	1
W. J. HARRIS	11/14/58	3T SWITCHING REG.	2
W. J. HARRIS	11/16/58	3T SWITCHING REG.	3
W. J. HARRIS	11-17-58	3T SWITCHING REG.	4
W. J. HARRIS	11-17-58	3T SWITCHING REG.	5
W. J. HARRIS	11-17-58	3T SWITCHING REG.	6
W. J. HARRIS	11-17-58	3T SWITCHING REG.	7
W. J. HARRIS	11-17-58	3T SWITCHING REG.	8
W. J. HARRIS	11-17-58	3T SWITCHING REG.	9
W. J. HARRIS	11-17-58	3T SWITCHING REG.	10

LAST USED	NOT USED
C20	C19
CR8	
CR9	
CR10	
CR11	
CR12	
CR13	
CR14	
CR15	
CR16	
CR17	
CR18	
CR19	
CR20	
CR21	
CR22	
CR23	
CR24	
CR25	
CR26	
CR27	
CR28	
CR29	
CR30	
CR31	
CR32	
CR33	
CR34	
CR35	
CR36	
CR37	
CR38	
CR39	
CR40	
CR41	
CR42	
CR43	
CR44	
CR45	
CR46	
CR47	
CR48	
CR49	
CR50	
CR51	
CR52	
CR53	
CR54	
CR55	
CR56	
CR57	
CR58	
CR59	
CR60	
CR61	
CR62	
CR63	
CR64	
CR65	
CR66	
CR67	
CR68	
CR69	
CR70	
CR71	
CR72	
CR73	
CR74	
CR75	
CR76	
CR77	
CR78	
CR79	
CR80	
CR81	
CR82	
CR83	
CR84	
CR85	
CR86	
CR87	
CR88	
CR89	
CR90	
CR91	
CR92	
CR93	
CR94	
CR95	
CR96	
CR97	
CR98	
CR99	
CR100	

ALL DIMENSIONS ARE IN INCHES UNLESS OTHERWISE SPECIFIED. DIMENSIONS ARE TO CENTER UNLESS OTHERWISE SPECIFIED. DIMENSIONS ARE TO CENTER UNLESS OTHERWISE SPECIFIED. DIMENSIONS ARE TO CENTER UNLESS OTHERWISE SPECIFIED.

FIG. 2

